

EBR/EBW Vertical Screen-Scroll

The CMI Model EBR/EBW Vertical Screen-Scroll Centrifuges are designed for small particles and will provide efficient and consistent moisture reduction even with fluctuating feed rates.



Available in 36", 40", CSI 40"HTS, 42" & 48"

HVC-1400 Vibratory

Available in either a 1400 or 1500 configuration, the CMI Model HVC Horizontal Vibratory Centrifuge is easily installed in nearly every coarse particle circuit. With its cartridge style drive assembly allowing for quick field re-placement and its economical low G operation, the HVC is designed with ease of operation in mind. Available with a two-piece screen configuration for replacement cost savings.



HSC Horizontal Scroll

The HSC is designed to be user-friendly while lowering the cost of in-stallation, operation, maintenance and repair. With its sealed, nearly maintenance-free drive unit, simplified lubricating system, sealed oil-filled planetary gearbox and self-contained construction, the HSC is rugged and reliable yet cost-effective. The optional I-Beam and Chain Hoist is used to install parts which can eliminate the need for an overhead crane.



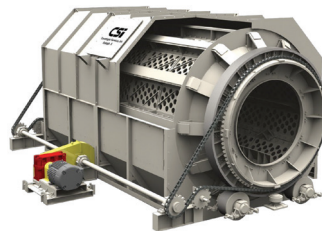
VC Vertical Vibratory

The VC Centrifuge uses vibratory dewatering technology and centrifugal force to provide reliable dewatering of coarse particle applications. A large feed hopper eliminates the need for a feed chute, and a catch in the center increases part life. The VC features an accelerating wear plate which allows for even screen wear. The drive assembly consists of the main working parts enclosed in a steel cast housing which can then be removed as a single unit for easy replacement or repair.



Rotary Breaker

The Rotary Breaker is designed to process feed materials such as coal, alumina, oil sands, aluminum dross and others for further processing.



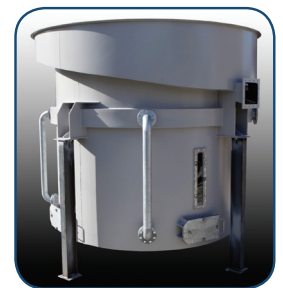
Featuring effluent and door hinge that can be placed in multiple positions. A grease lube system that requires no hoses, gauges or pumps. With differential couplings that can be replaced quickly with a wrench.

Sizes Available:

- 12' Diameter x 16', 20', 24' and 27' Length
- 10' Diameter x 16', 20' and 24' Length
- 9' Diameter x 16', 18', 20' and 24' Length
- 8' Diameter x 16' (Trailer Mounted System Available)

Teetered bed Separator

The CMI Teetered Bed Separator (TBS), also known as a hindered settling classifier. It uses a continuous upward current of water to suspend particles of a predetermined size or gravity (density). The computerized electronic control system automatically monitors the TBS operating conditions and makes necessary adjustments to maintain efficiency in separation.



The TBS is available in sizes ranging from 2 ft. in diameter (TBS 600) to 10 ft. in diameter (TBS 3000). Regardless of the application or the tonnage requirements, CMI can offer a TBS Model to accommodate your needs.